

New records of *Neruandella zerovae* Trjapitzin (Hymenoptera: Encyrtidae) in Mexico

The family Encyrtidae is composed of parasitic wasps; its members are found throughout the world in virtually all habitats, and are extremely important as biological control agents. The genus *Neruandella* Trjapitzin, 2004, belongs to the subfamily Encyrtinae. It was initially placed as part of the genus *Ruandella* by Trjapitzin and Ruíz-Cancino (Trjapitzin and Ruíz-Cancino, 2001). In 2004 *Neruandella* was described by Trjapitzin with the type species *Neruandella zerovae* (Trjapitzin, 2004). The holotype and paratype are females; both of them were collected in: "MEXICO: Sinaloa, 3mi NW Guamúchil, screen sweeping, 23-X-1982 (J. T. Huber)" (Trjapitzin and Ruíz-Cancino, 2001). The aim of this study is to determine taxonomically the species, record some morphological variation in the species and new localities in Mexico.

As part of a project, where encyrtids collected in the tropical dry forest of Mexico are studied, three specimens of *N. zerovae* Trjapitzin, 2004, were found, one in the state of Sonora, and two in the state of Colima. The new records for this species are: (female) MEXICO: Sonora. Sierra San Javier. Rancho Las Peñitas. 29 km al SE de Tecoripa. 581 msnm. 28° 33' 27" N, 109° 44' 21" O. 11-16/10/2004. Tr. Malaise. Cols. F. A. Noguera, E. González, E. Ramírez, S. Zaragoza y V. Jiménez. (2-females): MEXICO: Colima. 2 km NE Jiliotupa, Rancho El Tajo, 19° 03' 51.7" N, 103° 44' 37.2" O, Alt. 340 m TM1/27-02/IX-X/2006, Col. Alberto Moctezuma. MEXICO: Colima. 2 km NE Jiliotupa, Rancho El Tajo, 19° 03' 48.8" N, 103° 44' 39.3" O, Alt. 350 m TM2/21-26/VIII/2006, Col. Alberto Moctezuma. So far, this genus has been registered only to Mexico.

Some morphological and color differences (Figs. 1-6) were found in the specimens from Sonora and Colima. The holotype and paratype species present metasoma as long as mesosoma and head together while the specimens from Sonora and Colima show the metasoma as long as mesosoma. Exserted part of ovipositor is longer in specimens from Sonora and Colima (one-third length of metasoma) than those of the type species (slightly exserted). Also color is variable, species from Sonora and Colima are copper colored with slight purple and golden sheen, while those from Sinaloa are darker with metallic sheen. It may be the result of differing means of preservation. When specimens are collected into alcohol, the gaster may look very inflated and shorter, so the ovipositor appears to be more exserted because the gaster is distorted.

The three localities where *N. zerovae* has been collected present tropical dry forest as dominant vegetation; the species has been collected during August and October; maybe this species appears only during the rainy season. Hosts and males are unknown.

ACKNOWLEDGMENTS

Thanks to Felipe Noguera, Enrique Ramírez and Enrique González for facilitating specimens on which this study is based. Thanks to Susana Guzmán Gómez for supporting in taking the photographs for the paper. Special thanks to the following institutions for the support granted: Posgrado en Ciencias Biológicas (UNAM), Instituto de Biología (UNAM), Unidad Informática para la Biodiversidad, UNIBIO (UNAM) and Consejo Nacional de Ciencia y Tecnología (CONACYT).

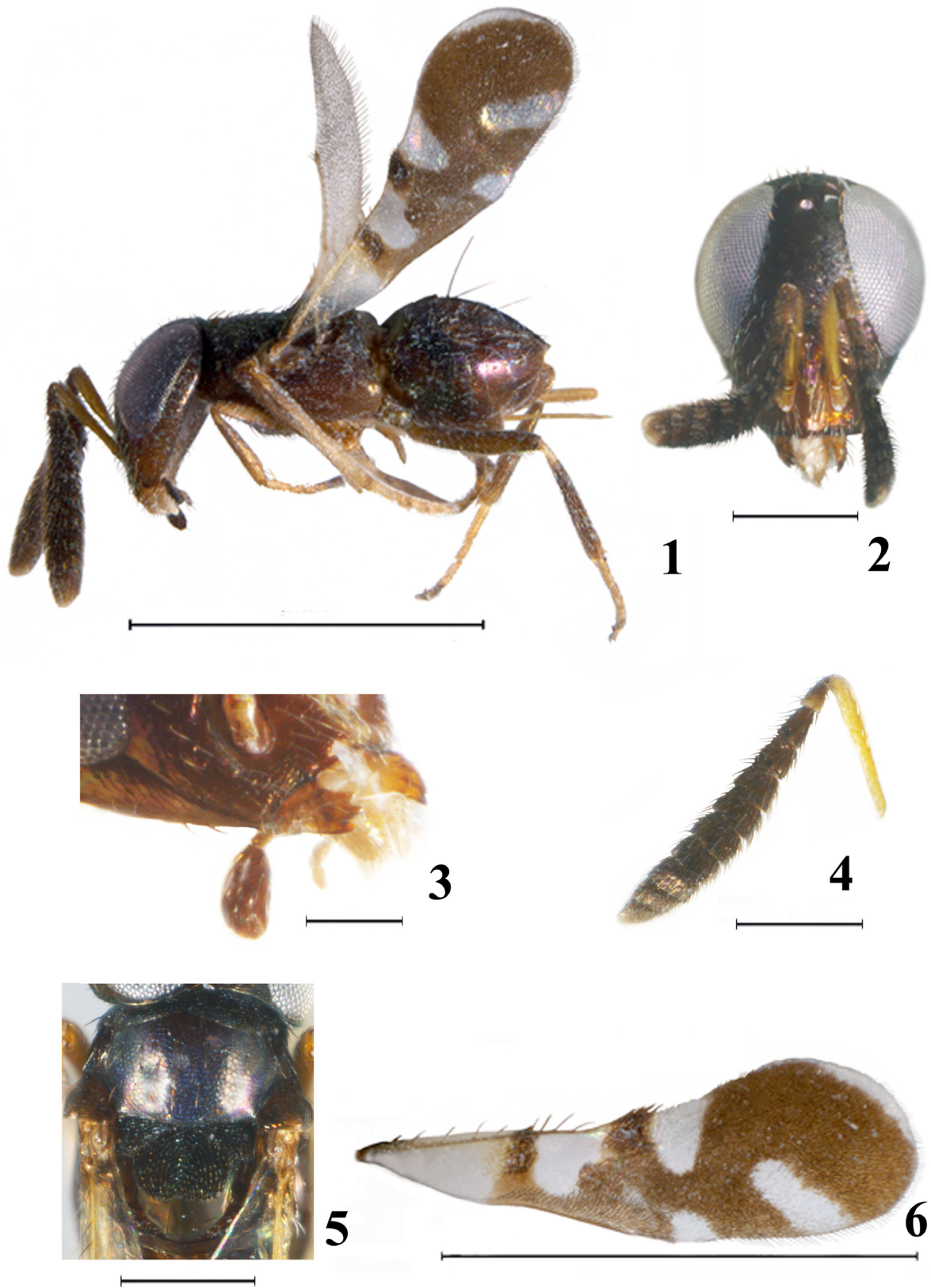
Beatriz Rodríguez-Vélez¹ and **Santiago Zaragoza-Caballero²** ^{1,2}Universidad Nacional Autónoma de México. Instituto de Biología, Departamento de Zoología. Tercer Circuito Exterior S/N. Apartado Postal 70 – 153. Código Postal 04510, ¹brodriguez@ibiologia.unam.mx, ²zaragoza@ibiologia.unam.mx

LITERATURE CITED

- Trjapitzin, V.A. y E. Ruíz-Cancino. 2001. Sinopsis de las especies de *Ruandella* Risbec (Hymenoptera: Chalcidoidea: Encyrtidae) y descripción de una nueva especie del estado de Sinaloa, México. *Folia Entomológica Mexicana*, 40(2): 213-219.
- Trjapitzin, V.A. 2004. *Neruandella* gen. n. from Mexico and USA (Hymenoptera: Encyrtidae). *Zoosystematica Rossica*, 13(1): 124.

Recibido: 6 de junio 2010

Aceptado: 13 de octubre 2010



Figures 1-6. *Neruandella zerovae*: 1) habitus, lateral view; 2) head, frontal view; 3) head, lateral view; 4) left antenna, lateral view; 5) thorax, dorsal view; 6) right forewing. Scales of figures: 1 and 6 is 1 mm; 2, 4 and 5 is 0.25 mm; and 3 is 0.10 mm.